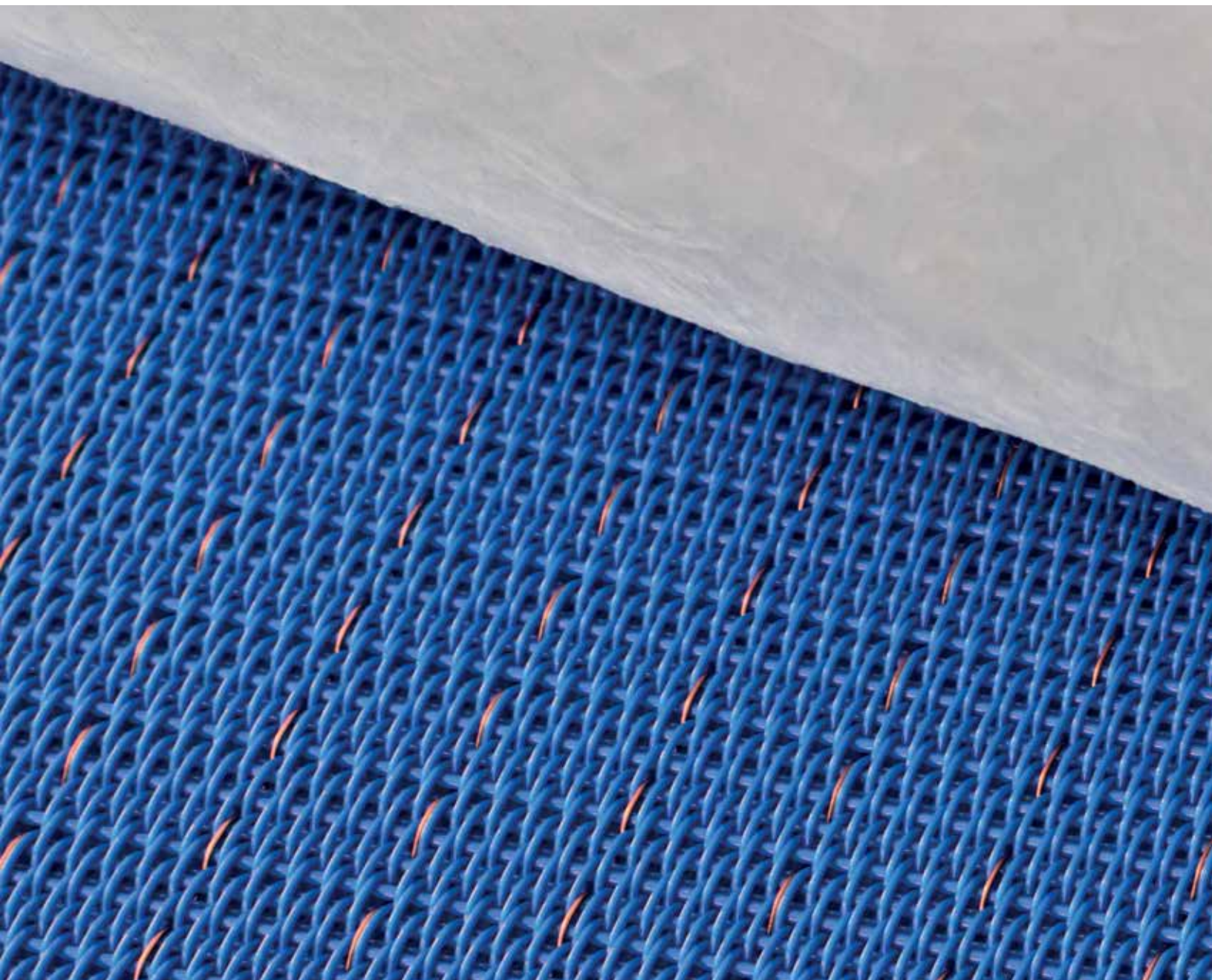


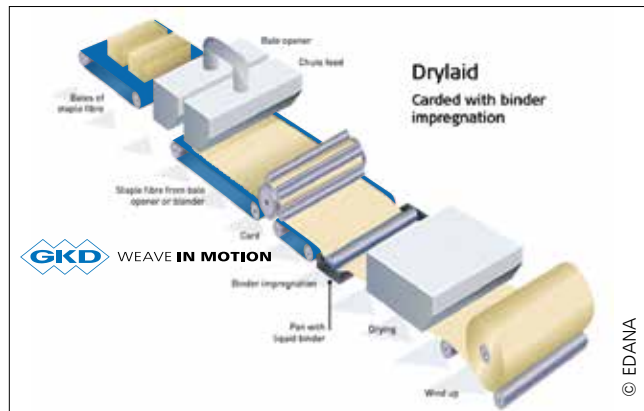
# PROCESS BELTS FOR NONWOVENS FORMING + THERMOBONDING APPLICATIONS



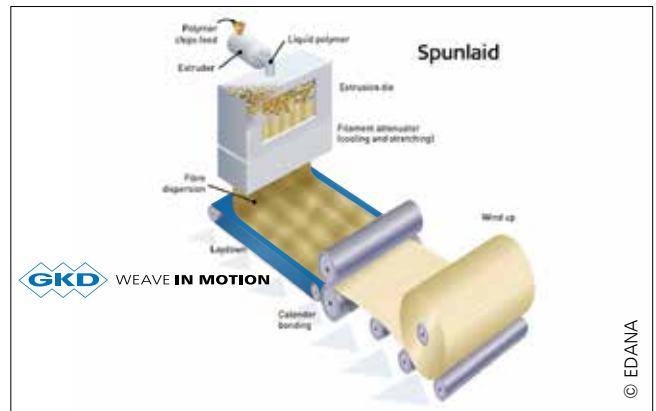
# CONDUCTO® - ANTISTATIC FORMING BELTS FOR HIGH SPEED APPLICATIONS

ROLLER CARDS / CROSSLAPPER / SPUNLAID / AIRLAID / WETLAID

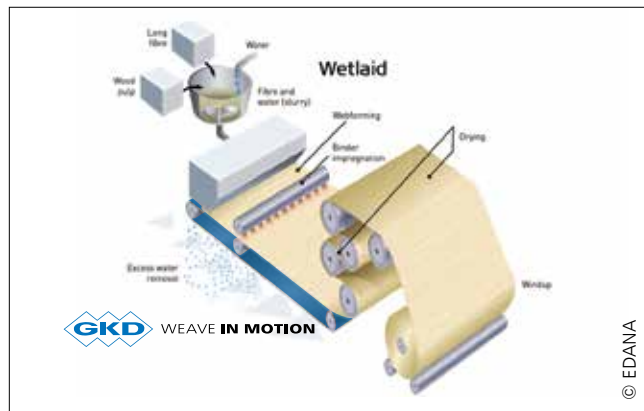
Electrostatic charge is a high risk for production and safety in the nonwovens industry. CONDUCTO®, the patented polyester fabric with bronze wire weave, guarantees continuous discharge – steadily and consistently high in accordance with ATEX Class 3 standard. Low fiber penetration, homogeneous web formation, customized air permeability, good web release as well as reliable deposition make CONDUCTO® the benchmark of efficient forming process. The web construction of polyester and bronze wires and its combination with mark-free seam designs create premium process belt solutions for web forming processes.



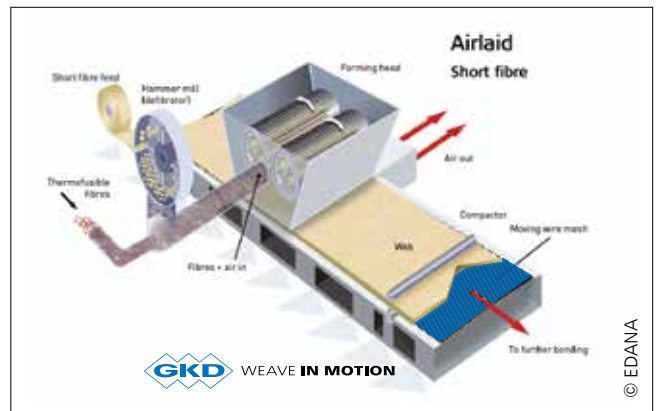
Drylaid - Krempel



Spunlaid



Wetlaid



Airlaid

© EDANA

© EDANA

© EDANA

© EDANA





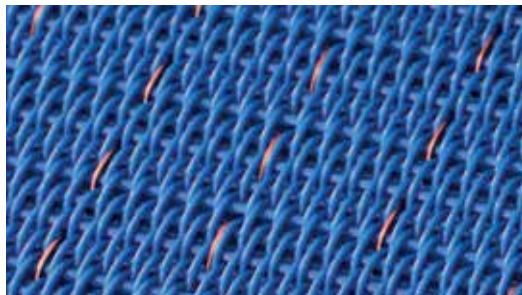
Oerlikon Neumag - Airlaid



STFI Chemnitz - Spunlaid



Trützschler Nonwovens-Roller Card



Type	Discharging	Construction	CFM	Application
CONDUCTO 1100	Bronze	Single layer	1100	Airlaid
CONDUCTO 2203	Bronze	Single layer	425	Airlaid
CONDUCTO 7600	Bronze	Double layer	670	Meltblown
CONDUCTIVE 7702	Carbon	Double layer	700	Spunbond, Carding
CONDUCTIVE 7690	Carbon	Double layer	690	Spunbond, Carding
CONDUCTIVE 7900	Carbon	Double layer	880	Spunbond, Carding
Type 7130	-	Double layer	1350	Hydro entanglement

The balanced relationship of fineness and grip predestines multi-layer CONDUCTO® and CONDUCTIVE for Airlaid and Spunlaid processes. With low fiber penetration and non-marking double loop pin seam, its construction guarantees maximum efficiency. To avoid adhesion of latex impregnated products, special coated DEBONDO is first class.

For the wet processing of glass fiber nonwovens, single-layer, endless woven process belts from GKD have a proven track record. With a smooth woven polyester process belt with non-marking endless woven seam they fulfill the highest requirements for safety and economy. Their robust lateral stability allows long life spans, effective drainage and good running characteristics, especially in high speed production.

Due to increased production speeds and upcoming atmospheric turbulences in roller cards and cross lappers, permeability to air is requested to installed process belts. Discharging process belts of series CONDUCTO® and CONDUCTIVE fulfill these requirements.



**ATEX 95**    
**II 3G cb IIB T4 und 3D T135°C**  
 -10°C < Ta < 100°C

# THERMOBONDING BELTS FOR AIR-THROUGH-DRYER AND DOUBLE-BELT-OVEN

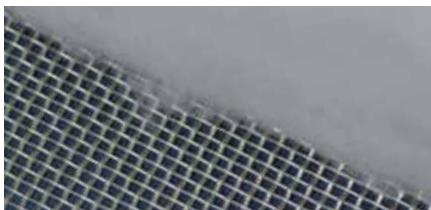
WEAVE IN MOTION process belts are successfully used in double belt dryers for nonwoven bonding. Their customized fabric design out of stainless steel, steel or bronze, or combinations of these materials, optimizes even the most demanding thermobonding process. Cross-stable and robust, they meet the special demands which are expected of high-performance belts. Their non-marking pin seam and special edge coating contribute to this performance. A magnetic process belt is used in double belt ovens as the upper belt. It is kept in the suspended position by the magnetic system of the oven. This supports exact tolerances during the compression phase. A special belt construction of a combination of materials made out of plastic and metal wires is possible.

In applications processing adhesive materials GKD offers a non-stick-coated surface reducing fiber adherence to the belt. For use in single belt dryers the customized woven process belts made from metal, PPS, PEEK or a combination of these materi-

als provide adaptable and unique solutions. Optimum cross-stability and running characteristics – even at high speeds – make them the leading solution for successful nonwoven drying.



Bronze belt with nonwoven web



Duofil with nonwoven web

No. per cm	Material	Remarks
2,9 / 2,8	AISI 316 / Steel	Magnetic
3 / 3	AISI 316 / AISI 316	Non-magnetic
4,6 / 4,21	Bronze / Steel	Magnetic
4,6 / 4,21	Bronze / AISI 316	Non-magnetic
7,5 / 5,2	AISI 316 / AISI 316	Robust in CD
3x3 / 4,5	AISI 316 / AISI 316	Robust in CD
3x2 / 5,5	Steel / Steel	Robust in CD
4 / 5	PPS / Steel coated	Light weight, magnetic
4 / 5,25	PPS / AISI 316	Light weight, non-magnetic
3x3 / 4,5	PPS / Steel	Light weight, magnetic
3x3 / 4,5	PPS / AISI 316	Light weight, non-magnetic
3 / 3	Glass fiber / Steel	Light weight, magnetic & non-stick-coated



© Strahm Hi-Tex Systems AG

*Strahm Oven – feeding*



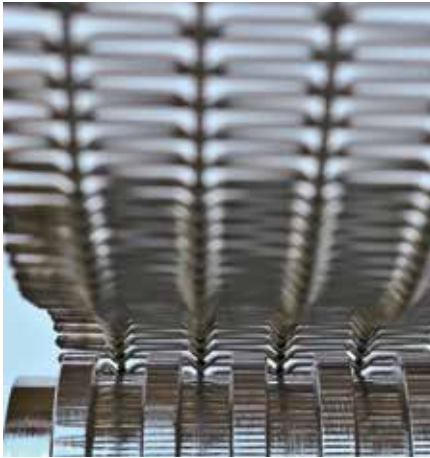
© Strahm Hi-Tex Systems AG

*Strahm oven – outcoming*



# TRACKMATIC BELTS

WASHING / BLEACHING / FORMING / CALIBRATION / DRYING



*Trackmatic „inside“*



*Trackmatic „outside“*



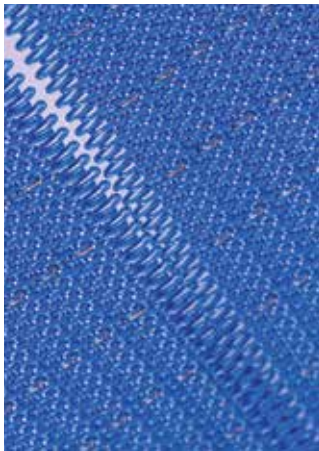
*Trackmatic „cables in the warp“*

Type	Mesh opening	Ø Wire mm	Material	Article no.	Kg/m <sup>2</sup>	% open area
1504	15x0,4	2,00/1,50	AISI 316	45370400	8,7	19
1508	15x0,8	2,00/1,50	AISI 316	45370501	7,4	31
1515	15x1,5	2,00/1,50	AISI 316	45371200	5,9	44
1530	15x3	2,00/1,50	AISI 316	45372400	4,2	59
1550	15x5	2,00/1,50	AISI 316	45373200	3,3	68
1620	15x2	2,00/2,00	AISI 316	45371850	7,5	44
1660	15x6	2,00/2,00	AISI 316	45374000	4,2	66
1715	15x1,5	2,80/2,01	AISI 316	45371220	9,5	36
1740	15x4	2,80/2,00	AISI 316	45373145	6,2	56
1820	15x2	2,80/2,50	AISI 316	45371885	12,4	37
1860	15x6	2,80/2,50	AISI 316	45374015	7,5	59
1505	15x0,5	2,00/1,50	PES/AISI 316	45800250	8,7	19
1601	15x0,1	2,00/2,00	PES/AISI 316	45800121	12	6,2
1601	15x0,1	2,00/2,00	Kevlar/AISI 316	45800123	11,9	6,7

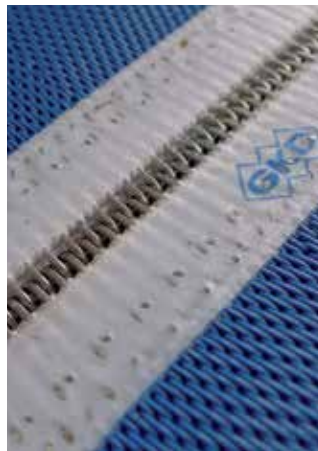
Trackmatic® process belts are a unique, self-guiding development by GKD. Using cables in the warp, the belts are flexible in running direction (MD). The crimped weft wires are guided in grooves of drive roller steering and supporting rollers. A belt tracking system is not required.

# SEAM DESIGNS

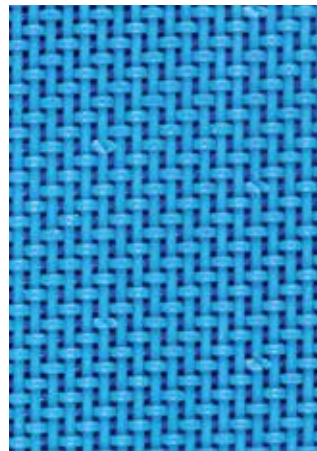
SYNTHETIC / METAL



*Woven pin seam*



*Clipper seam - type PAD*



*Endless woven seam*



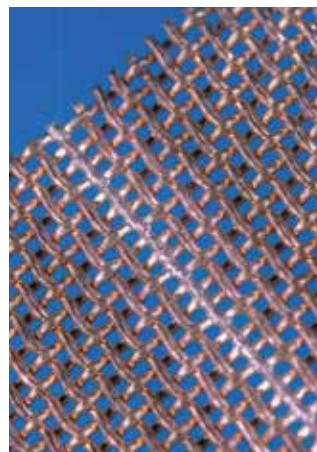
*Added woven spiral seam*



*Soldered pin seam*



*Pyramide pin seam*



*Welded seam*



*Pin seam*

Apart from the requirement for stability in the running cycle of the belt GKD technology is focused on reducing the impact of the seam on the product. GKD engineers consider the customer's process and product requirements to select the optimum seam design. GKD offers a wide range of different seam solutions for different process belt types and technical applications.



# EDGE DESIGNS

SYNTHETIC / METAL



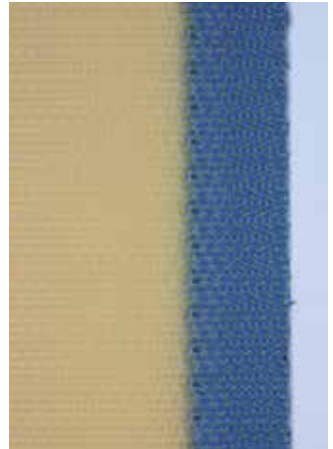
*V-edge*



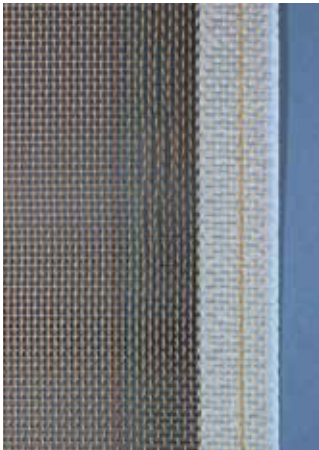
*Thermo-sealing*



*Glue-sealing*



*Edge-coating*



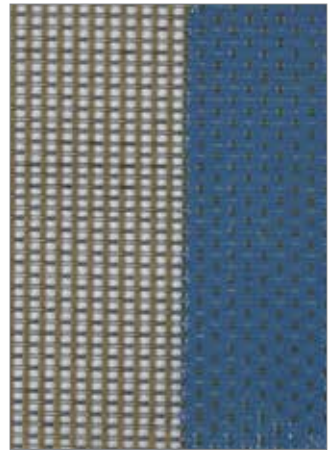
*Film-sealing*



*Welded edges*



*Trackmatic 3/2 welding*



*DUOFIL - edge coating*

Cleaned, deburred, welded, thermofixed or coated edges guarantee fixation of the weft wires and avoid sticking of products. A smooth and consistent finish of the edges regarding straightness and thickness is absolutely necessary for straight circulation of the belt in high speeds.



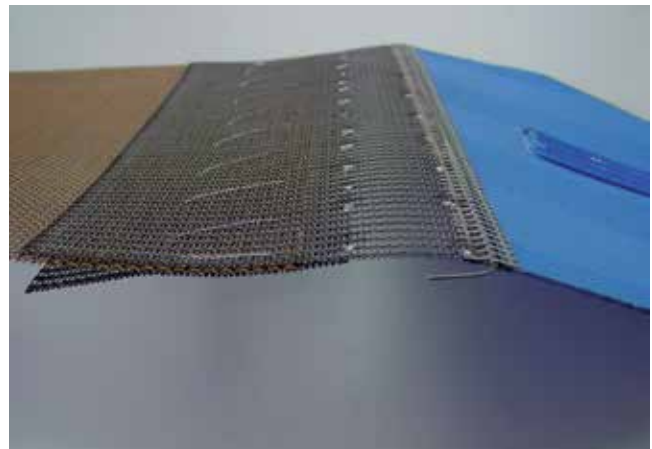
# TOW-IN-DEVICES



*Tow in device „complete“*



*Detail „connection point“*



*Detail „connection point“*

Tow-in-devices guarantee an easy, safe and damage-free belt installation. They are especially useful in machines with cramped space and when installing long process belts. GKD offers tow-in-devices which can be used multiple times. Our detailed installation manuals enable our customers to install process belts by their own technicians.

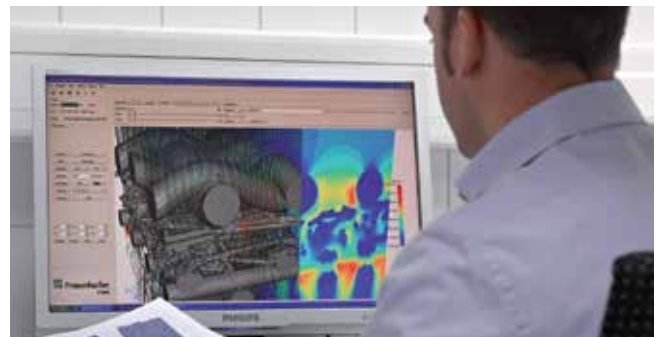
# RESEARCH / DEVELOPMENT / ADVICE



*Advice*



*Fabric construction*



*Computer-aided simulation*

WEAVE IN MOTION stands for competence and customer benefits from the start. Hand in hand with our customers we develop new value-adding concepts and powerful solutions. Our technical advice combines materials and plant knowledge with wide-ranging practical experience of processes and procedure technologies. This also includes the analysis of the application processes as well as individual and detailed, process-optimized belt solutions. The most modern manufacturing procedures and technologies form the base for our leading global position. With computer-aided simulation we optimize requirement-specific fabric constructions and processes as well as development and manufacturing times.

24/7 SERVICE HOTLINE:  
00 49 (0) 2421 803 308



*GKD Service team*



*Seam welding*



Beside individual advice, a further strength of GKD is technical service. A large team of experienced technicians is available for belt installation and trouble shooting. Our philosophy is: Only the combination of sales & service guarantees acceptance and success of GKD products.





WORLD WIDE WEAVE

**GKD – GEBR. KUFFERATH AG**

Metallweberstraße 46  
52353 Düren  
Germany  
T +49 (0) 2421 803 - 0  
F +49 (0) 2421 803 - 227  
info@gkd.de  
www.gkd.de

**GKD-USA, INC.**

825 Chesapeake Drive  
Cambridge, MD 21613  
U.S.A.  
T +1 410 221 0542  
F +1 410 221 0544  
sales@gkdusa.com  
www.gkdusa.com

**GKD (UK) LTD.**

Genesis 4, Church Lane,  
Heslington York  
North Yorkshire YO10 5DQ  
Great Britain  
T +44 (0) 1904 420 500  
F +44 (0) 1904 420 509  
sales@gkd.uk.com  
www.gkd.uk.com

**GKD (BEIJING) IND. TECHNOLOGIES CO., LTD.**

No. 11, Jinma Industrial Zone,  
Middle Road, Shunyi District  
101318 Beijing  
P.R. China  
T +86 10 516 596 18  
F +86 10 694 976 01  
gkd@gkd-china.com  
www.gkd-china.com

**GKD TEAM FRANCE, Office Croisilles (near Paris)**

Sophie Gautier  
28210 Croisilles  
France  
T +33 (0) 672 18 40 75  
F +33 (0) 237 43 59 54  
sophie.gautier@gkd.de  
www.gkd.de

**GKD BUISMET (PTY) LTD.**

Aureus Ext. 3, Cnr. Fiat and Chrysler Streets  
RSA-1759 Randfontein  
South Africa  
P.O. Box 6175  
RSA-1767 Greenhills  
South Africa  
T +27 (0) 11 412 47 70  
F +27 (0) 11 412 48 23  
gkdrsa@gkd.co.za  
www.gkd.co.za

**GKD MIDDLE EAST**

Office 1308 Fortune Tower  
Jumeirah Lakes Towers  
P.O. Box 112410  
Dubai  
United Arab Emirates  
T +971 4 375 70 70  
F +971 4 427 04 20  
dubai@gkd.de

**GKD INDIA LTD.**

52, Industrial Area Jhotwara  
Jaipur - 302012, Rajasthan  
India  
T +91 141 710 51 00  
F +91 141 710 51 99  
query@gkd-india.com  
www.gkd-india.com

**GKD LatAm S.A.**

La Estera 418  
Lampa, Santiago  
Chile  
T +56 2 2489 1040  
F +56 2 2489 1031  
info@gkd-latam.com  
www.gkd-latam.com